



TK International  
020 7794 8700  
www.t-k.co.uk

Residential Sales  
Residential Lettings  
Property Management

Sales Office:  
9 Heath Street  
Hampstead  
London NW3 6TP  
E: sales@t-k.co.uk

Lettings Office:  
16-18 Heath Street  
Hampstead  
London NW3 6TE  
E: lettings@t-k.co.uk

tk.international  
TK International  
TK International

Est.  
1998



## **Daleham Mews Belsize Village NW3**

A larger than average four bedroom house, situated in this popular and quiet cobbled mews between Hampstead and Belsize Villages.

This desirable property offers flexible and well appointed accommodation over three floors with an emphasis on good size rooms and an abundance of natural light, the house is approached via an impressive high ceilinged entrance hall, leading to a 21' principal bedroom with dressing area and en suite shower room, there's also a modern fitted kitchen, utility room and guest cloakroom on this floor.

The first floor comprises the main double aspect reception room with access to a large roof terrace, study and bedroom. there are two further bedrooms and a bathroom on the second floor.

Daleham Mews is ideally situated moments from the cafés, restaurants and shops of Belsize Lane, with Hampstead Village (Northern Line) being a short walk away.

**£2,950,000**

**SOLE AGENT**

**Freehold**

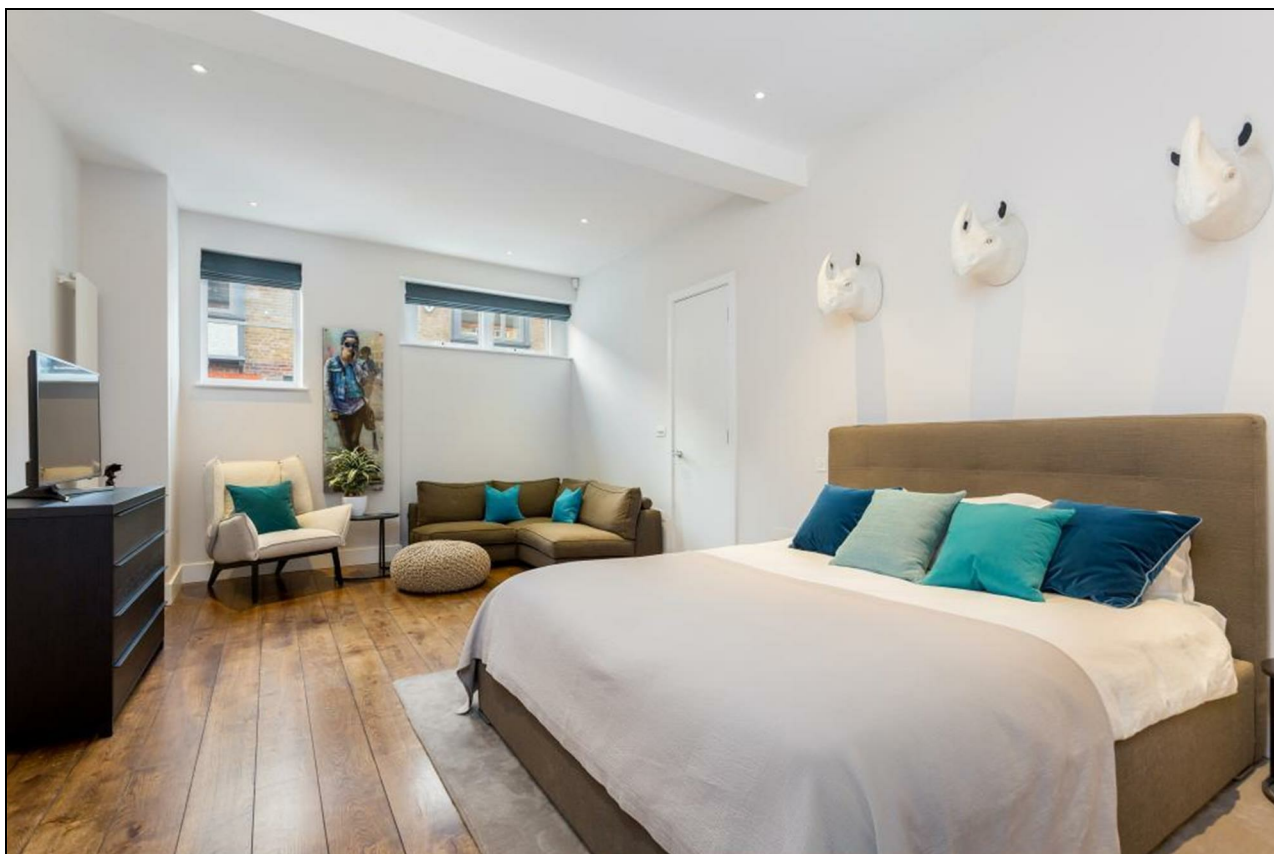














## Daleham Mews, NW3


Gross Internal Area (approx) = 186.8 sq m / 2011 sq ft

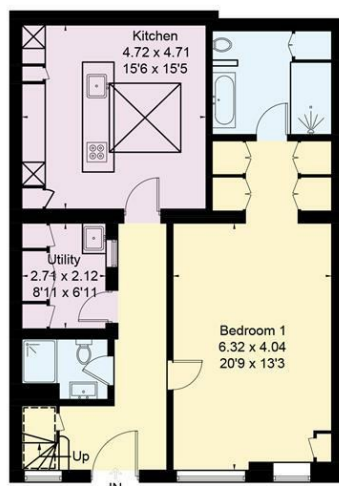
(Of which 4.0 sq m / 43 sq ft is restricted head height)

Terrace Area = 39.7 sq m / 427 sq ft

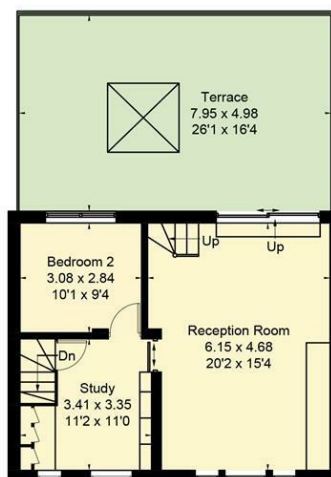
For identification only. Not to scale.



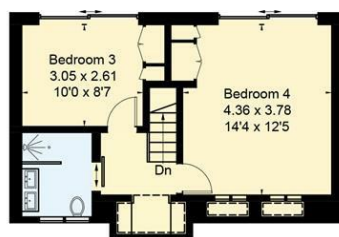
 = Reduced headroom below 1.5m / 5'0"



Ground Floor



First Floor



Second Floor